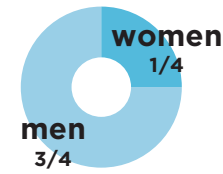







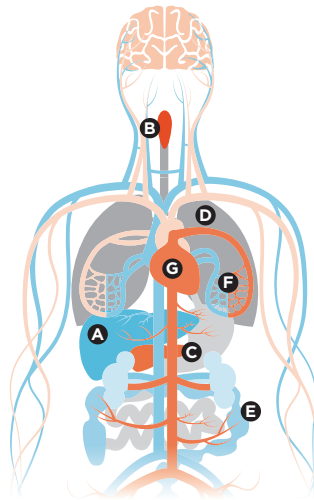
Alcohol and health

3 million **deaths**
6 deaths every minute
from harmful use of alcohol
every year



Harmful use of alcohol causes

-  **100%** of alcohol use disorders
-  **18%** of suicides
-  **18%** of interpersonal violence
-  **27%** of traffic injuries
-  **13%** of epilepsy



- A** **48%** of liver cirrhosis
- B** **26%** of mouth cancers
- C** **26%** of pancreatitis
- D** **20%** of tuberculosis
- E** **11%** of colorectal cancer
- F** **5%** of breast cancer
- G** **7%** of hypertensive heart disease

Reduce harmful use of alcohol

Best buy interventions

-  **Regulate alcohol distribution**
-  **Restrict or ban advertising**
-  **Increase prices**

More key interventions



Prevent and treat alcohol use disorders



Raise awareness of alcohol-attributable health burden



Support community action to prevent and reduce the harmful use of alcohol



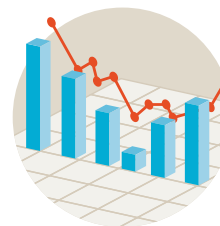
Provide consumer information on alcohol containers



Regulate informally produced alcohol



Implement drink-driving policies



Develop surveillance systems for alcohol consumption, health consequences and policy



10% reduction in the harmful use of alcohol by 2025